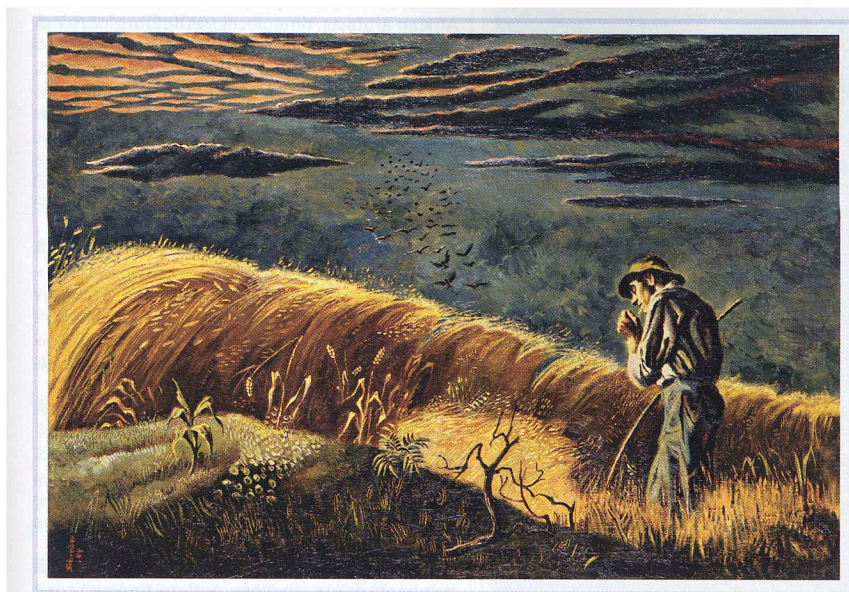


# IN new york

art & collectibles

art galleries,  
antiques, auctions



**ABOVE: BUCOLIC SCENES—AMBER WAVES OF GRAIN, PURPLE MOUNTAINS MAJESTY, FRUITED PLAINS—INCLUDE "LATE LIGHT," 1944, BY GEORGES SCHREIBER, IN THE EXHIBITION "HEARTLAND: THE AMERICAN SCENE."**

■ MICHAEL ROSENFELD GALLERY, 24 W. 57TH ST., 7TH FL., 247-0082